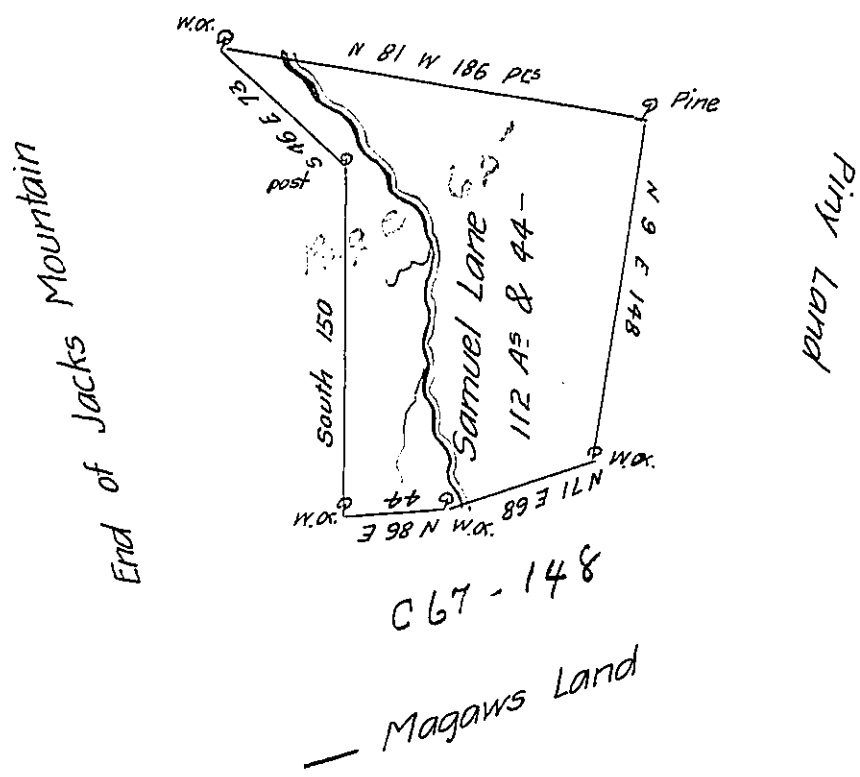


Three Spring Tract



Situate in Bedford County Shirley Township adjoining the three Spring tract Containing 112 A's & 44 P's & the Usual Allowance of Six Per Cent for Roads. Surveyed the 2<sup>d</sup> day of December 1785 In Pursuance of a Warrant dated the 24<sup>th</sup> day of August 1785

George Woods D.S.

To John Lukens Esq. S. G.

Daniel Brodhead Esq. S.G.

IN TESTIMONY that the above is a copy of the original remaining on file in the Department of Internal Affairs of Pennsylvania, made conformably to an Act of Assembly approved the 16th day of February, 1833, I have hereunto set my Hand and caused the Seal of said Department to be affixed at Harrisburg, this twelfth day of September 1905

*George D. Brown*  
Secretary of Internal Affairs.